



GMT MONTHLY MEMBERSHIP PROGRESS REPORT

Results as of: 5/31/2020

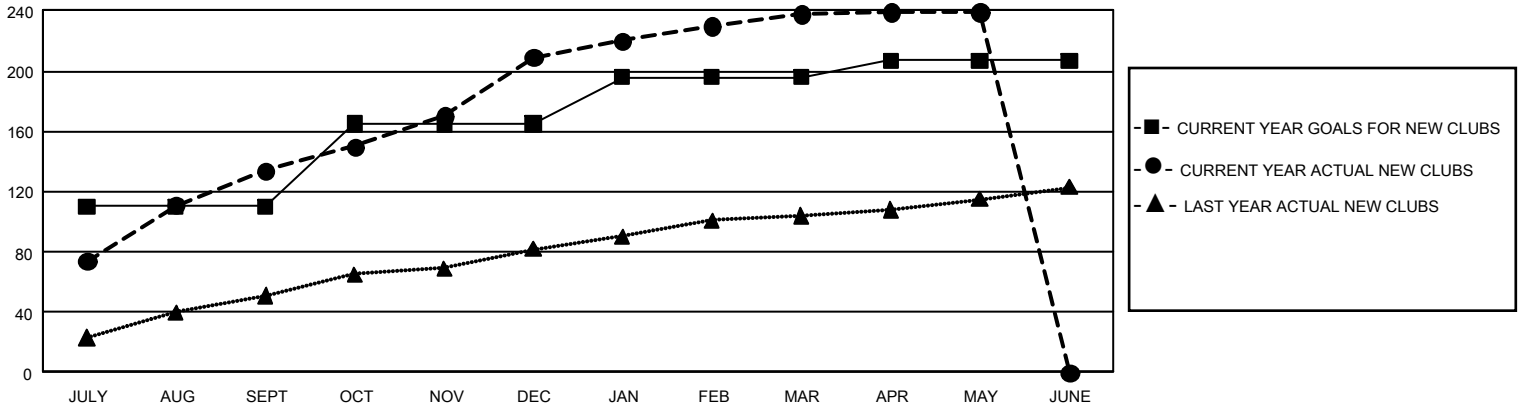
GMT Constitutional Area 6, Group D

GMT: OPEN

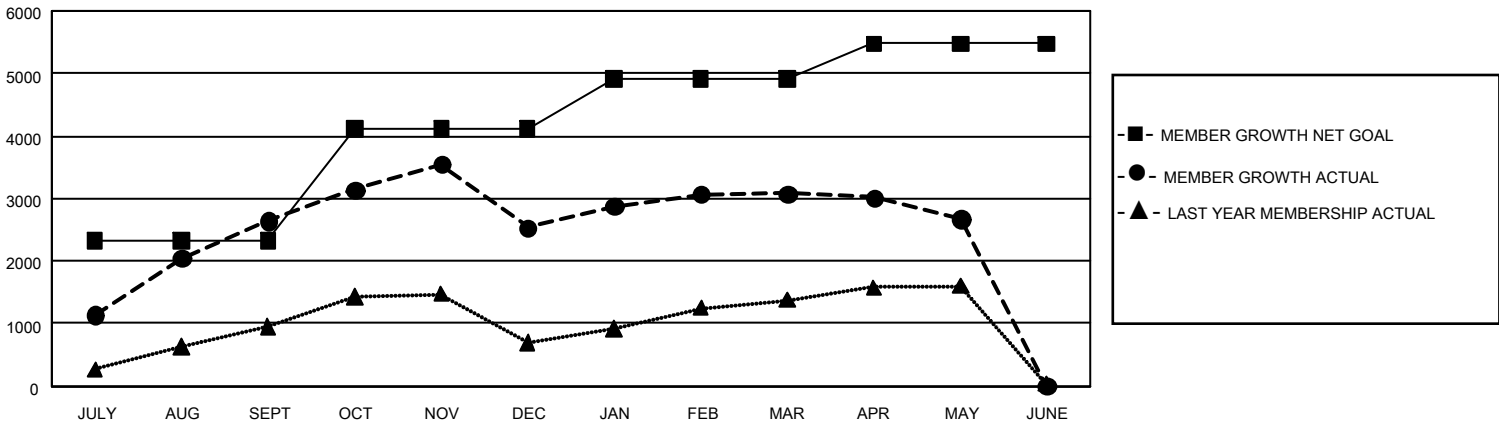
REPORT DOES NOT INCLUDE CLUBS IN UNDISTRICTED AREAS.

Clubs				Members			
RESULTS FOR 2019-2020				RESULTS FOR 2019-2020			
QUARTER	NEW CLUB GOAL	NEW CLUBS	DROPPED CLUBS	QUARTER	MEMBER GROWTH NET GOAL	MEMBER GROWTH ACTUAL	DROPPED MEMBERS ACTUAL (including transfers)
JULY/AUG/SEPT	330	134	3	JULY/AUG/SEPT	6,975	3,814	1,114
OCT/NOV/DEC	165	75	38	OCT/NOV/DEC	5,355	2,324	2,410
JAN/FEB/MAR	93	29	8	JAN/FEB/MAR	2,415	1,366	739
APR/MAY/JUNE	33	1	0	APR/MAY/JUNE	1,680	227	593

GOALS AND ACTUAL NEW CLUBS CUMULATIVE



GOALS AND ACTUAL MEMBERS CUMULATIVE



DROPPED CLUBS: 49

750 CLUBS OF 1,365 ADDED 1 OR MORE NEW MEMBERS

GENDER DISTRIBUTION

MALE 24,126 (72.25%)
FEMALE 9,268 (27.75%)

DROPPED MEMBERS

DECEASED	23
CLUB CANCELLED	850
OTHER	3,983
TOTAL	4,856

[CLICK HERE FOR CUMULATIVE MEMBERSHIP DATA](#)

TOTAL FAMILY UNIT MEMBERS 20,664

FAMILY MEMBERS PAYING HALF DUES 12,950